

*A proudly Victorian gold exploration and development company.*



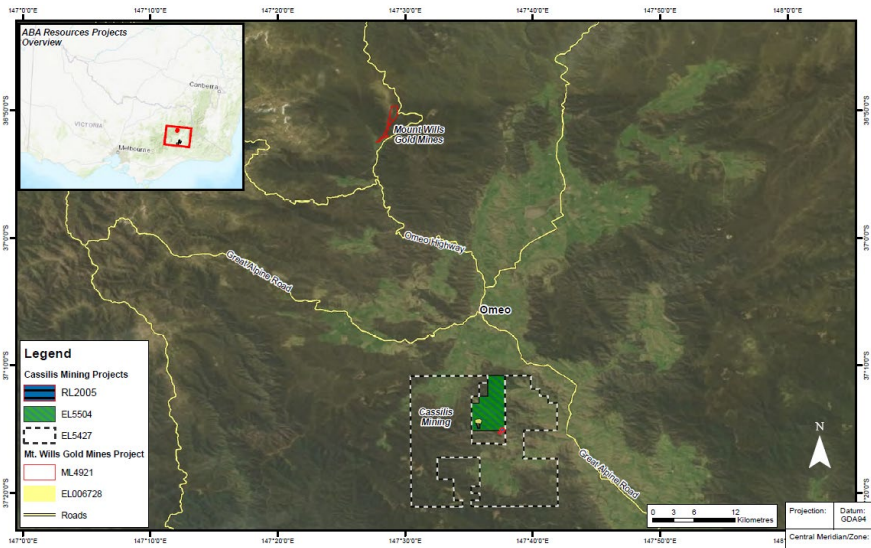
**ABA'S VISION IS TO DEVELOP A CONTEMPORARY AND SUSTAINABLE MINING COMPANY FOCUSED ON THE HISTORIC OMEO GOLDFIELDS OF VICTORIA.**

Our mineral assets are located in a safe jurisdiction with strong exploration upside, including a Mining Licence at Mount Wills Gold Mines near Omeo and approx. 263km<sup>2</sup> of Exploration Licenses in the Cassilis Region.

We aim to declare a JORC compliant Mineral Resource Estimate for Mt Wills Gold Mines in Q2 FY2020, with a Proof of Concept Study to follow in Q3. During the second half of FY2021 we aim to complete a Pre-Feasibility Study targeting a maiden JORC compliant Ore Reserve.

We plan to commence a parallel exploration program at Cassilis Mining in late FY2020.

At ABA, we're committed to our local communities, underpinned by our values of Safety & Sustainability, Problem Solving, Partnership and Pride.



## ABA Resources Pty Ltd

### BOARD:

Marino Sussich - Chairman  
 Anthony Lococo - Finance Director & Company Secretary  
 Peter Lombardo - Director

### MANAGEMENT:

Colin Moorhead - Interim CEO  
 Darrin Usher - GM Projects  
 Stuart Gula - GM Studies  
 Spencer Cole - GM Commercial  
 Brian McDonald - Operations Manager

### CONTACT:

166 Day Avenue, Omeo VIC 3898  
 +61 (3) 5159 1500  
 info@abaresources.com.au

[abaresources.com.au](http://abaresources.com.au)

[linkedin.com/company/abaresources](https://www.linkedin.com/company/abaresources)

[facebook.com/abaresourcesvic](https://www.facebook.com/abaresourcesvic)

**Our tenements are located in the historic goldfields in the Omeo district of Victoria and include a Mining License covering Mt Wills Gold Mines and Exploration Licenses at Cassilis Mining.**

**This area has had little modern exploration.**

### MT WILLS GOLD MINES

- Former Victorian gold mine with significant historical production
- ~ 2.4km<sup>2</sup> continuous Mining License MIN4921 including 6 Ha of freehold land
- ~ 43.5km of drill core logged, sampled and assayed
- Significant occurrences of mineralized historical mine waste that may be amenable to retreatment
- JORC compliant Mineral Resource Estimate in Q2 FY2020
- Concept Study Q3 FY2020 will inform PFS and Permitting processes

### CASSILIS MINING

- EL 5504 covers 23.9 km<sup>2</sup>
- EL 5427 covers 239 km<sup>2</sup>
- RL 2005 covers 0.3086 km<sup>2</sup>
- In addition, EL006728 (0.3558 km<sup>2</sup>) is under moratorium ground for which ABA has a competing application
- Includes >350 historic gold mines and workings, including the historic King Cassilis mine
- Exploration drilling program in planning stages, aiming to start in Q3 FY2020